

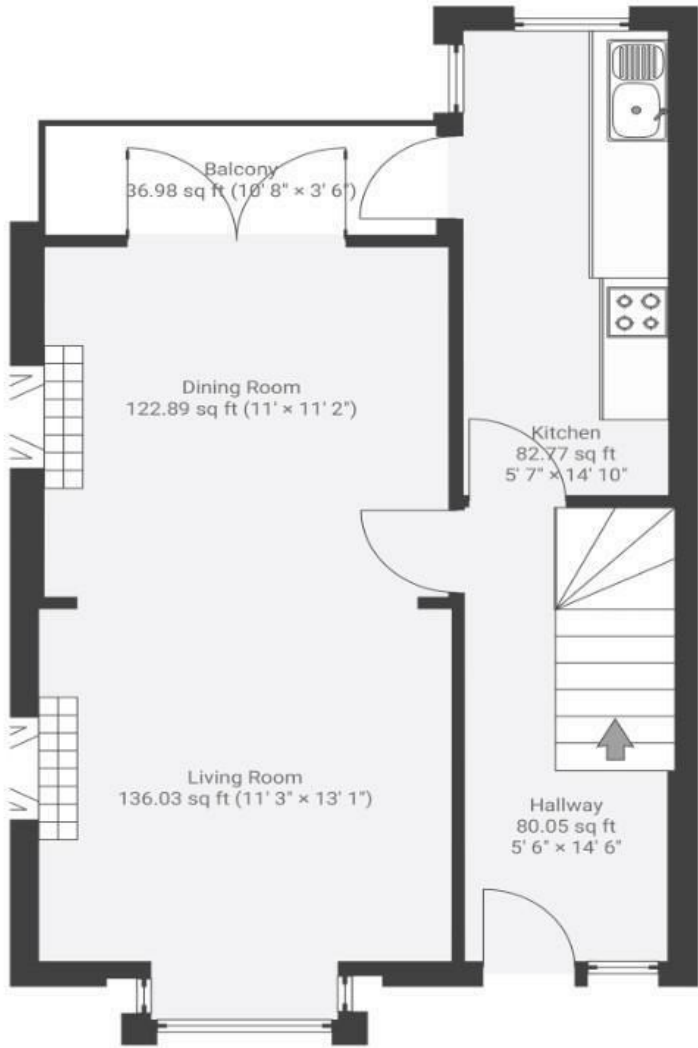
Brendon Road

WINDMILL HILL

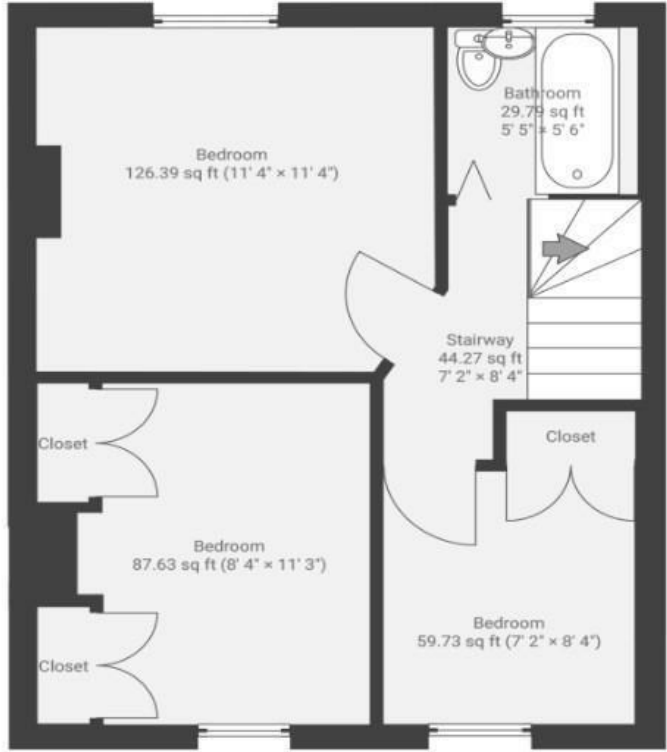
APPROXIMATE FLOOR AREA
78.0 SQM / 839 SQFT



GROUND FLOOR



FIRST FLOOR



Illustrations are for reference purposes only, measurements are approximate, not to scale.

Boardwalk

Brendon Road

, BRISTOL

£

£425,000



BS3 4PL

zzz

3 Bedrooms



1 Bathrooms

"We have loved living on Brendon Road-it's been the perfect place to bring up our young family. Every one on our road is super friendly and Windmill Hill has a very proactive community spirit. We love being so close to so many great amenities, for example, Victoria Park, Windmill Hill City farm and North Street and are able to walk into town within half an hour. We really appreciate being able to walk our children to and from school (St Mary Redcliffe) through the park and being able to enjoy nature throughout the year."

